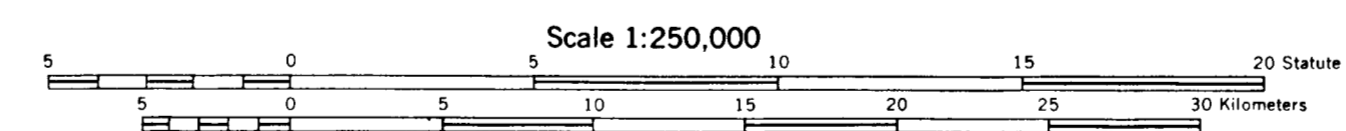


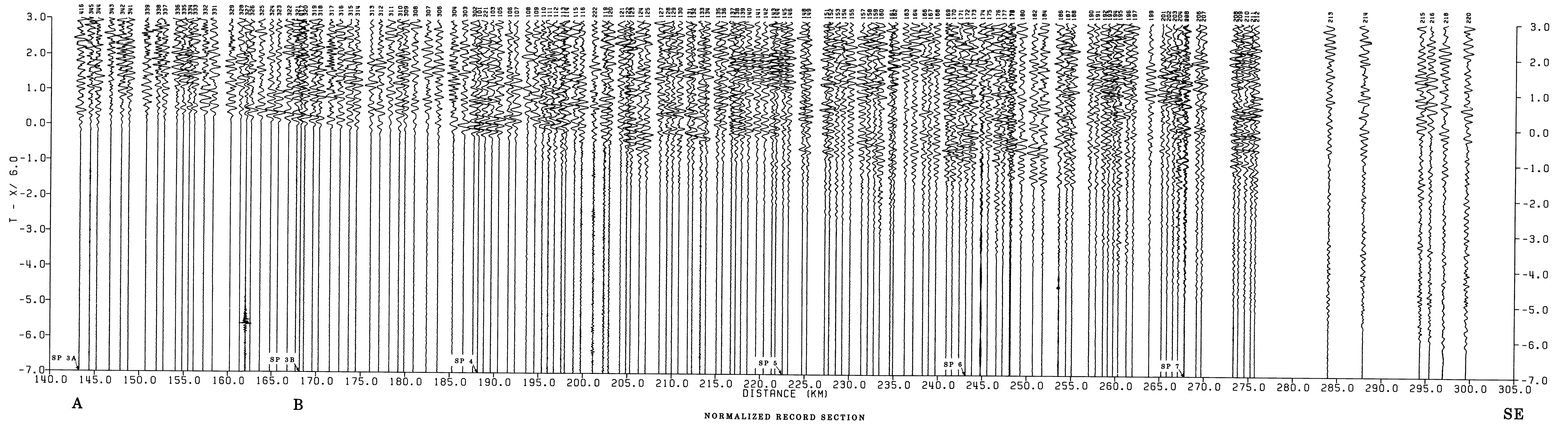
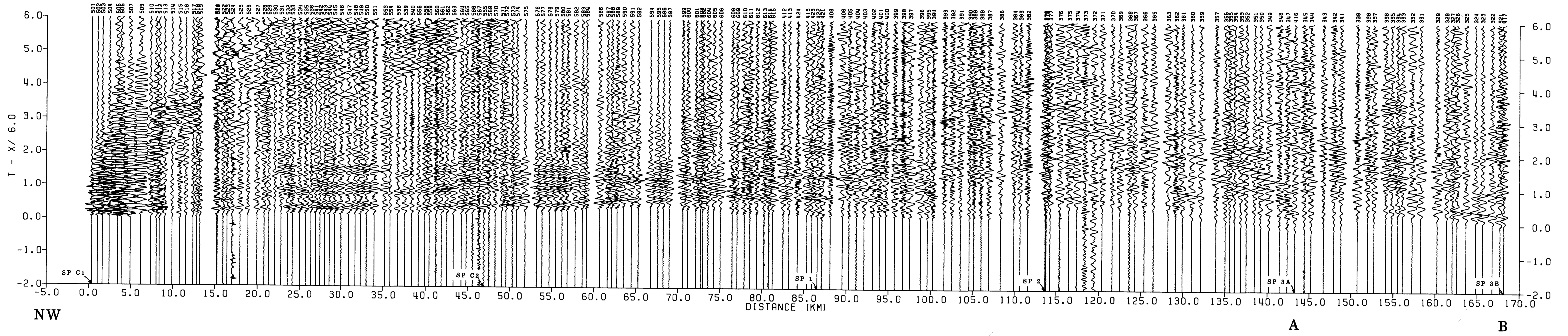
\* Shot Point  
▲ Recording Unit



DEPLOYMENTS 1, 2, AND 3 : DEER ISLE TO BLACK LAKE

by  
J.M. Murphy and J.H. Luetgert  
1986

This report is preliminary and has not been reviewed for conformity with U.S. Geological Survey editorial standards.

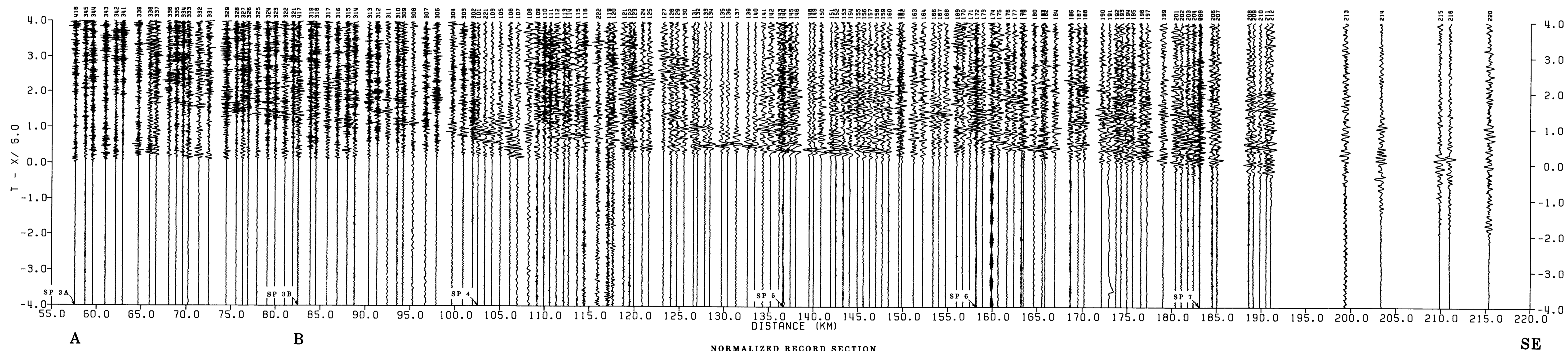
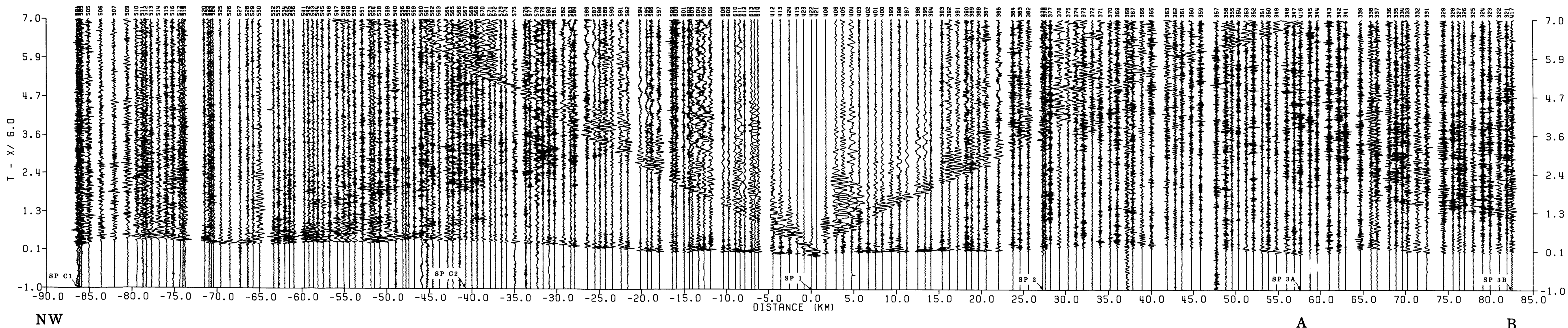


BLACK LAKE TO DEER ISLE  
 SHOT POINT C1

by  
 J.M. Murphy and J.H. Luetgert

This report is preliminary and has not been reviewed for conformity with U.S. Geological Survey editorial standards.





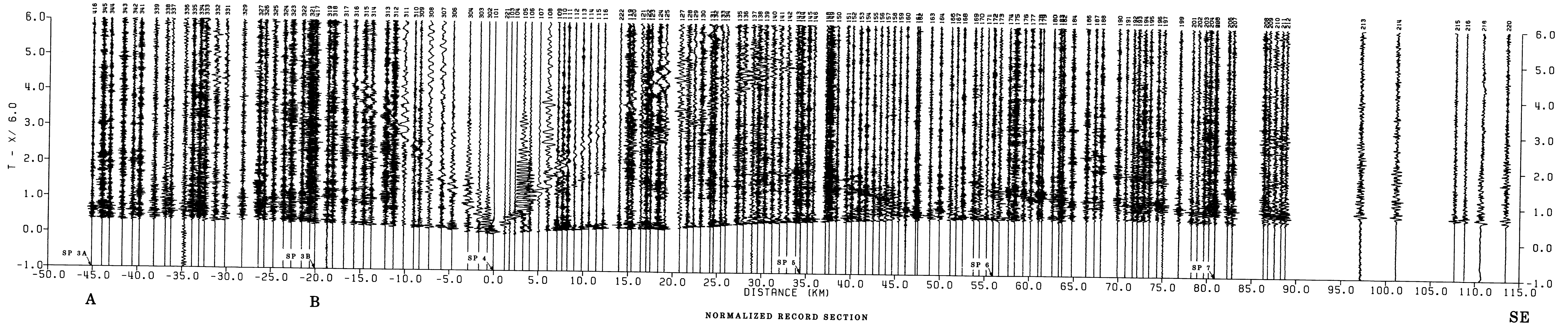
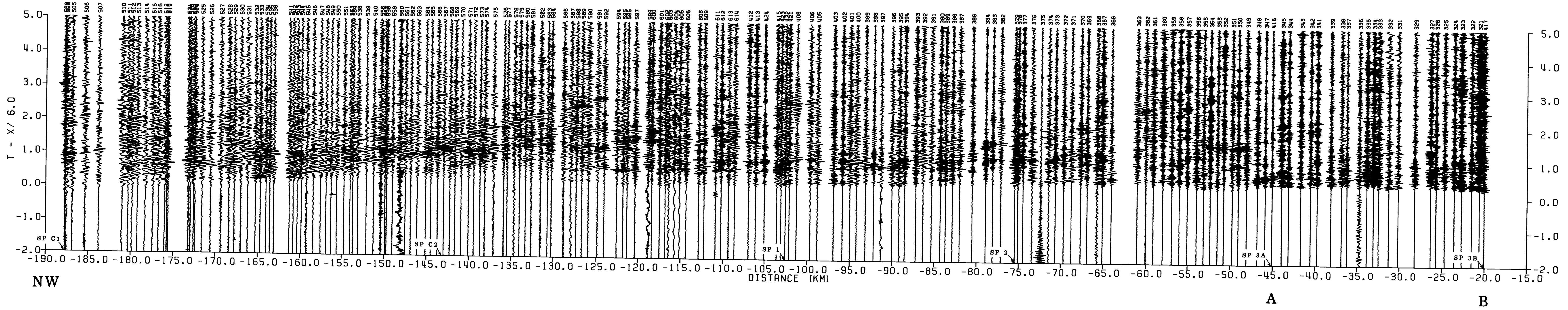
BLACK LAKE TO DEER ISLE  
 SHOT POINT 1

by  
 J.M. Murphy and J.H. Luetgert

1986

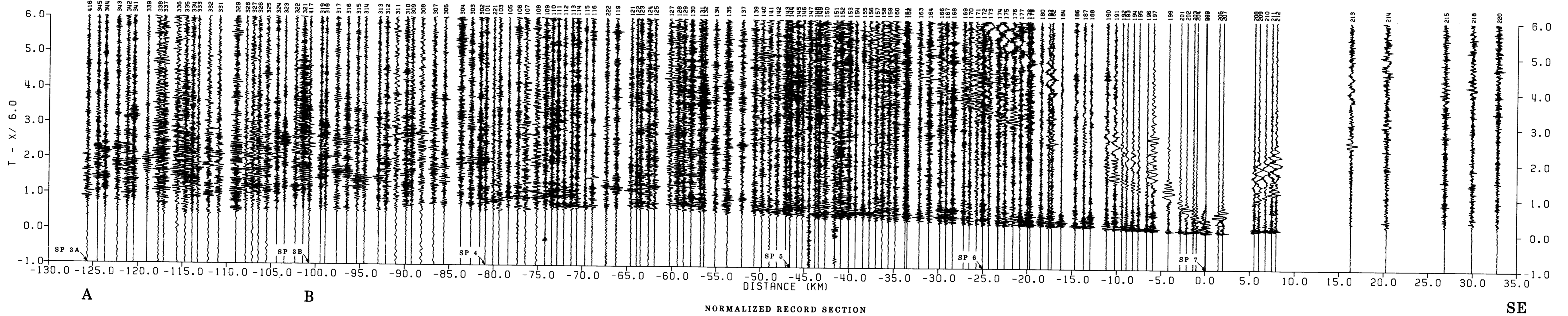
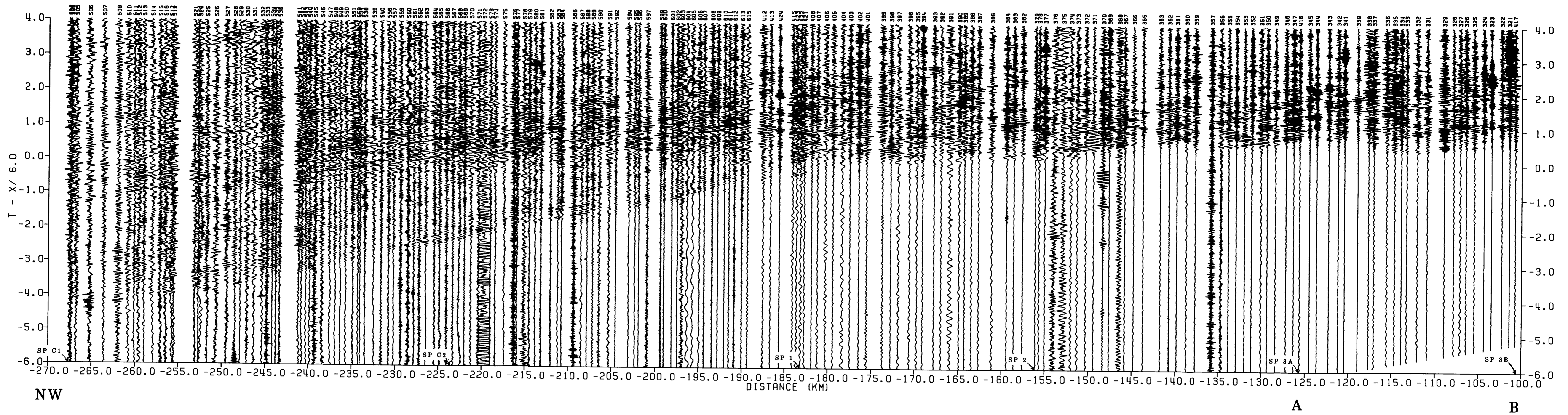
This report is preliminary and has not been reviewed for conformity with U.S. Geological Survey editorial standards.





BLACK LAKE TO DEER ISLE  
 SHOT POINT 4  
 by  
 J.M. Murphy and J.H. Luetgert  
 1986

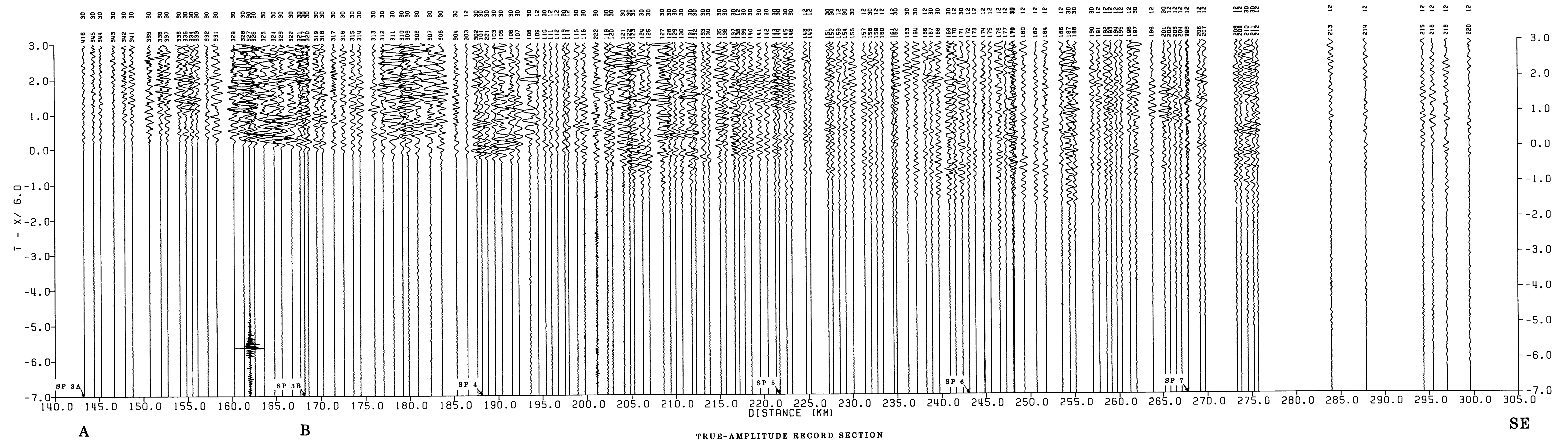
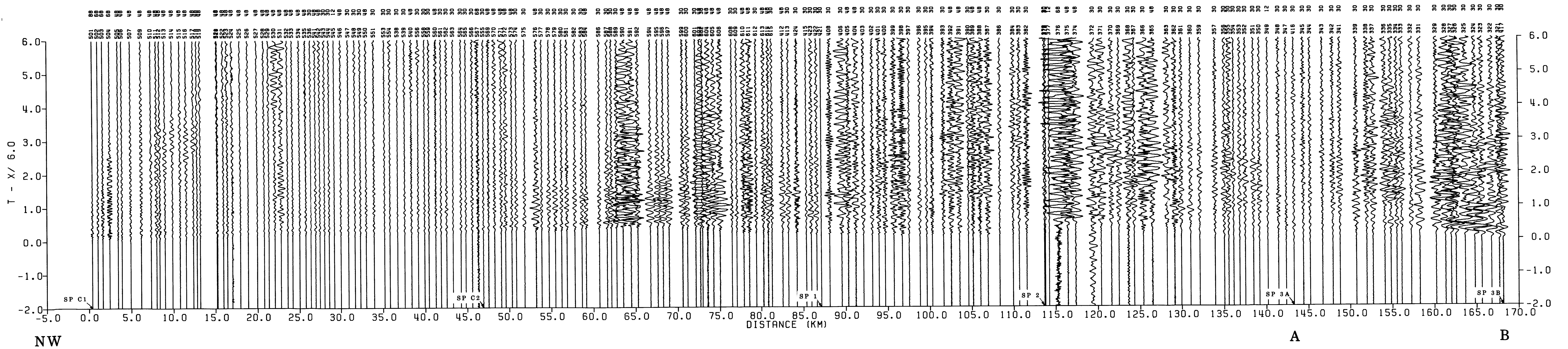




BLACK LAKE TO DEER ISLE  
 SHOT POINT 7  
 by  
 J.M. Murphy and J.H. Luetgert  
 1986

This report is preliminary and has not been reviewed for conformity with U.S. Geological Survey editorial standards.





TRUE-AMPLITUDE RECORD SECTION

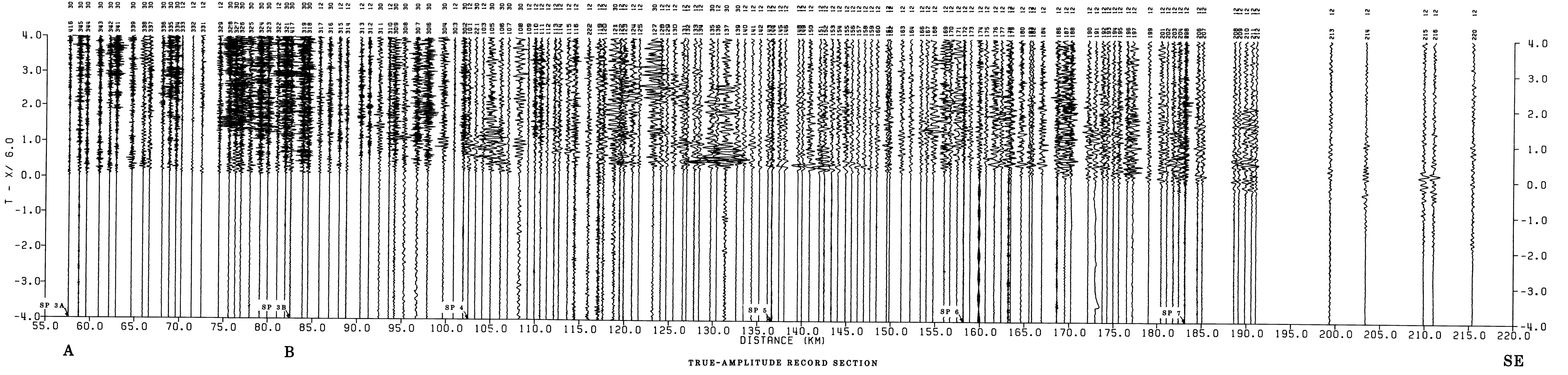
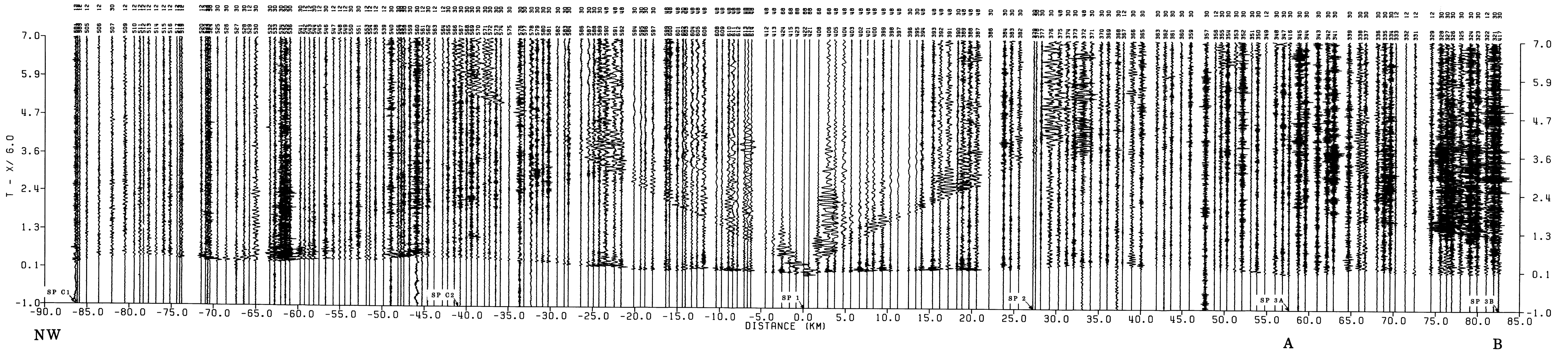
BLACK LAKE TO DEER ISLE  
SHOT POINT C1

by  
J.M. Murphy and J.H. Luetgert

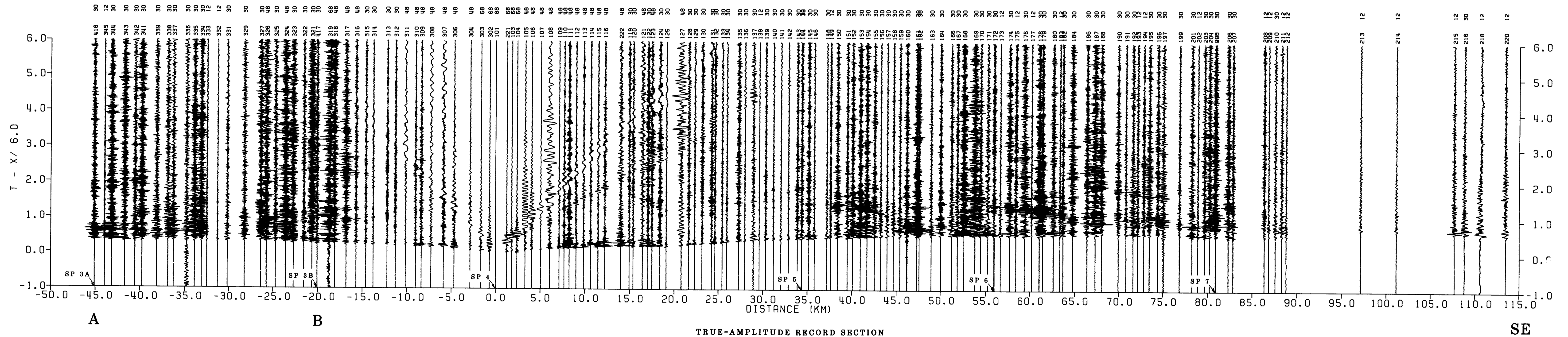
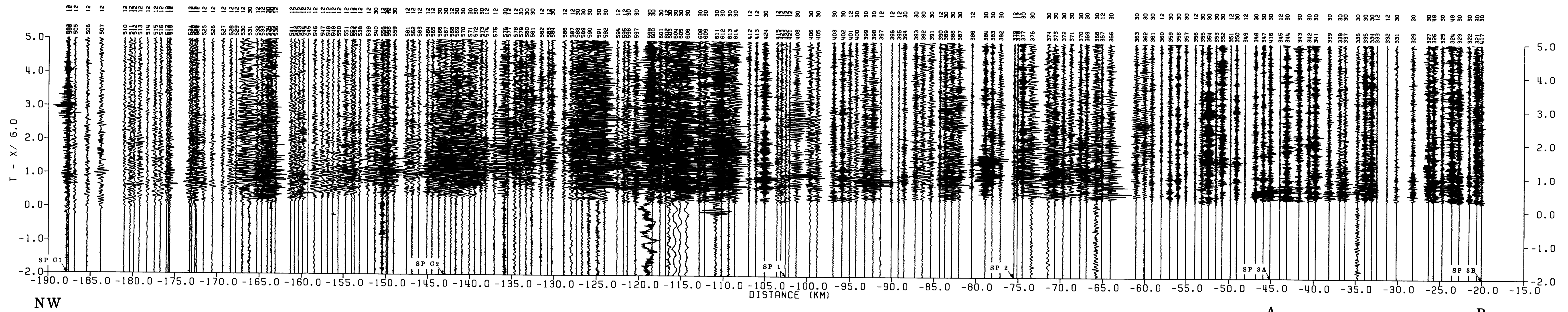
1986

This report is preliminary and has not been reviewed for conformity with U.S. Geological Survey editorial standards.









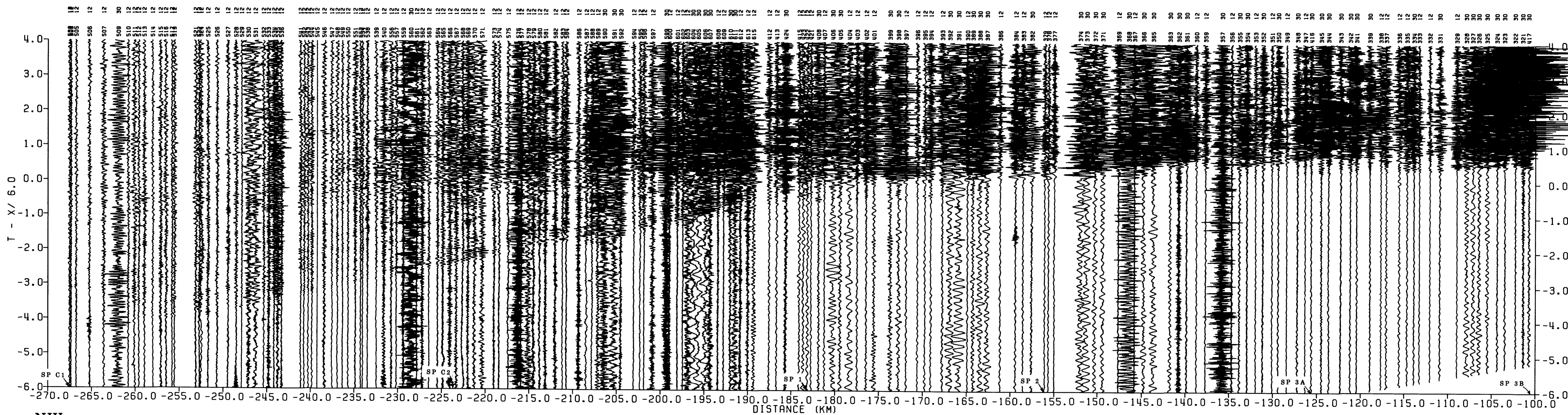
BLACK LAKE TO DEER ISLE  
 SHOT POINT 4

by  
 J.M. Murphy and J.H. Luetgert

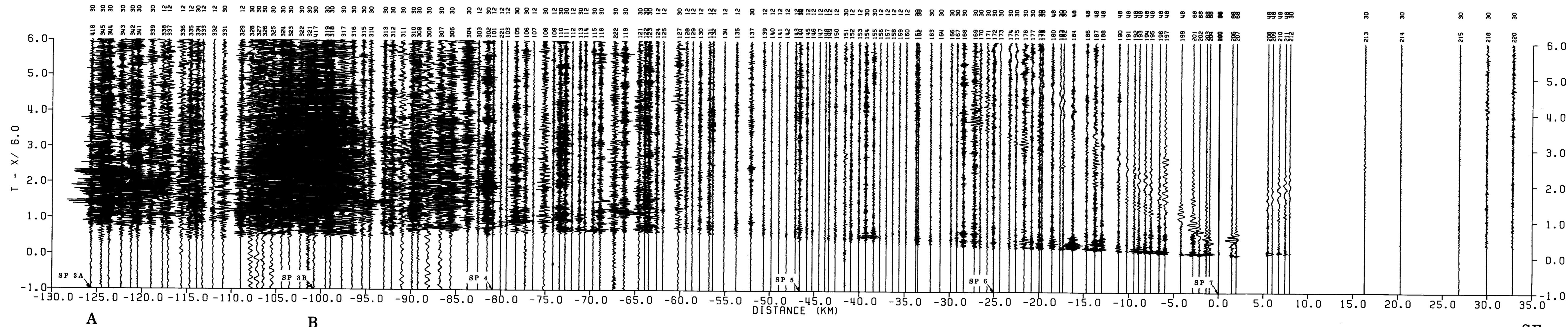
1986

This report is preliminary and has not been reviewed for conformity with U.S. Geological Survey editorial standards.





NW A B

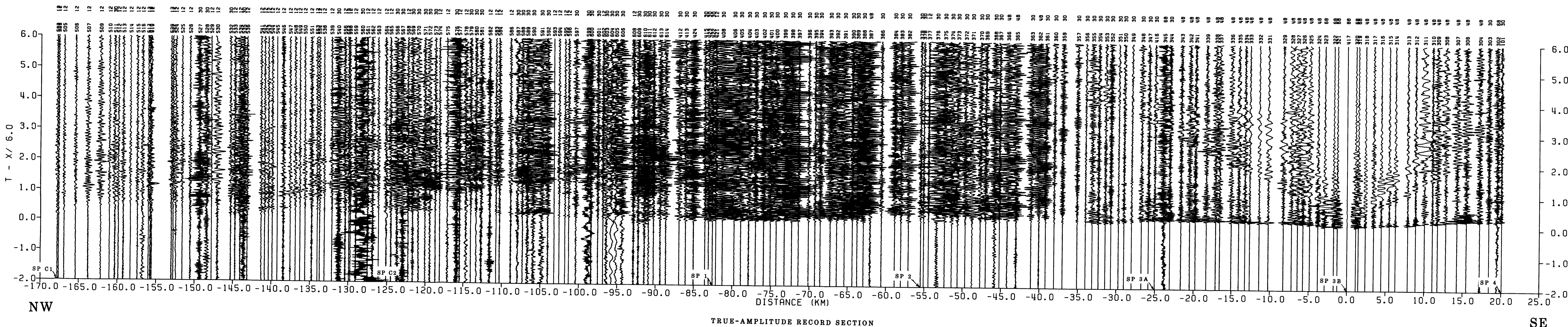


A B E

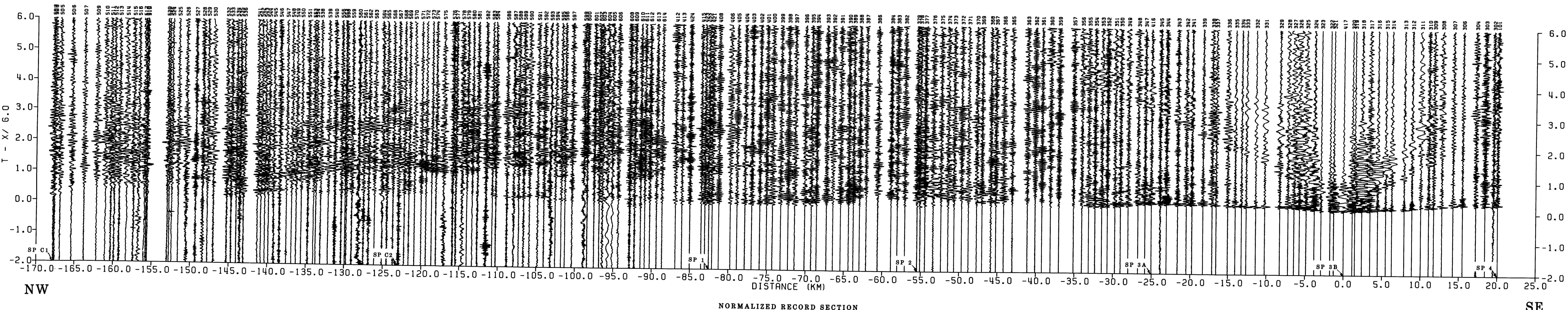
TRUE-AMPLITUDE RECORD SECTION  
 BLACK LAKE TO DEER ISLE  
 SHOT POINT 7  
 by  
 J.M. Murphy and J.H. Luetgert  
 1986

This report is preliminary and has not been reviewed for conformity with U.S. Geological Survey editorial standards.





TRUE-AMPLITUDE RECORD SECTION

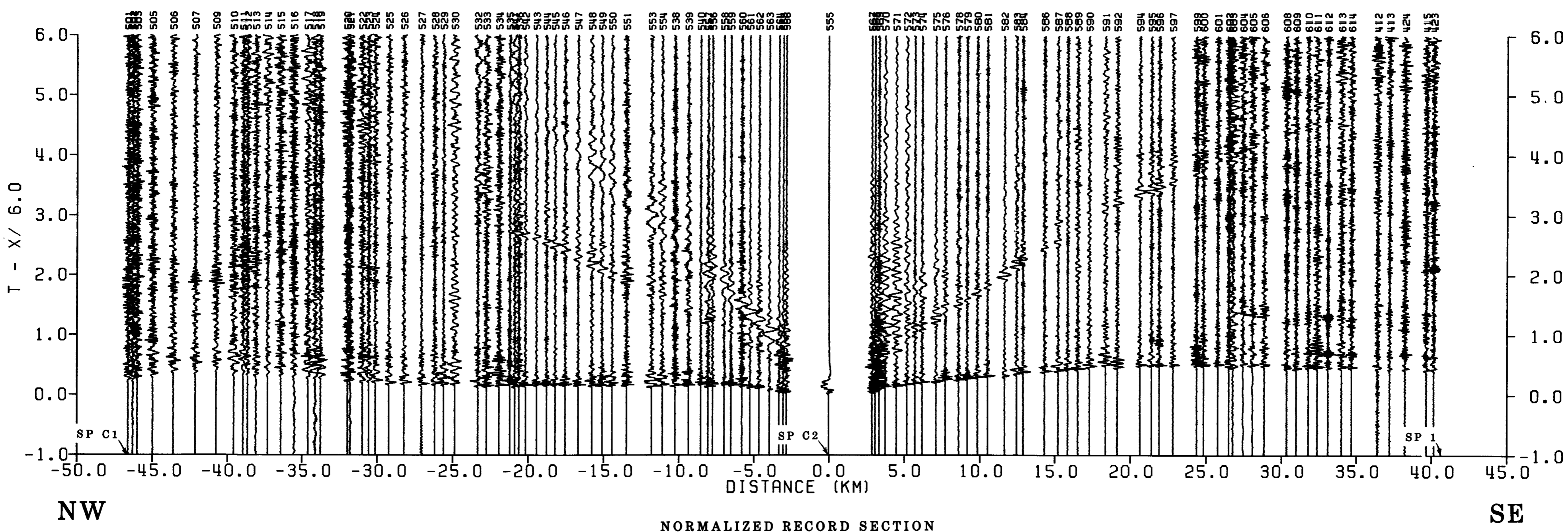
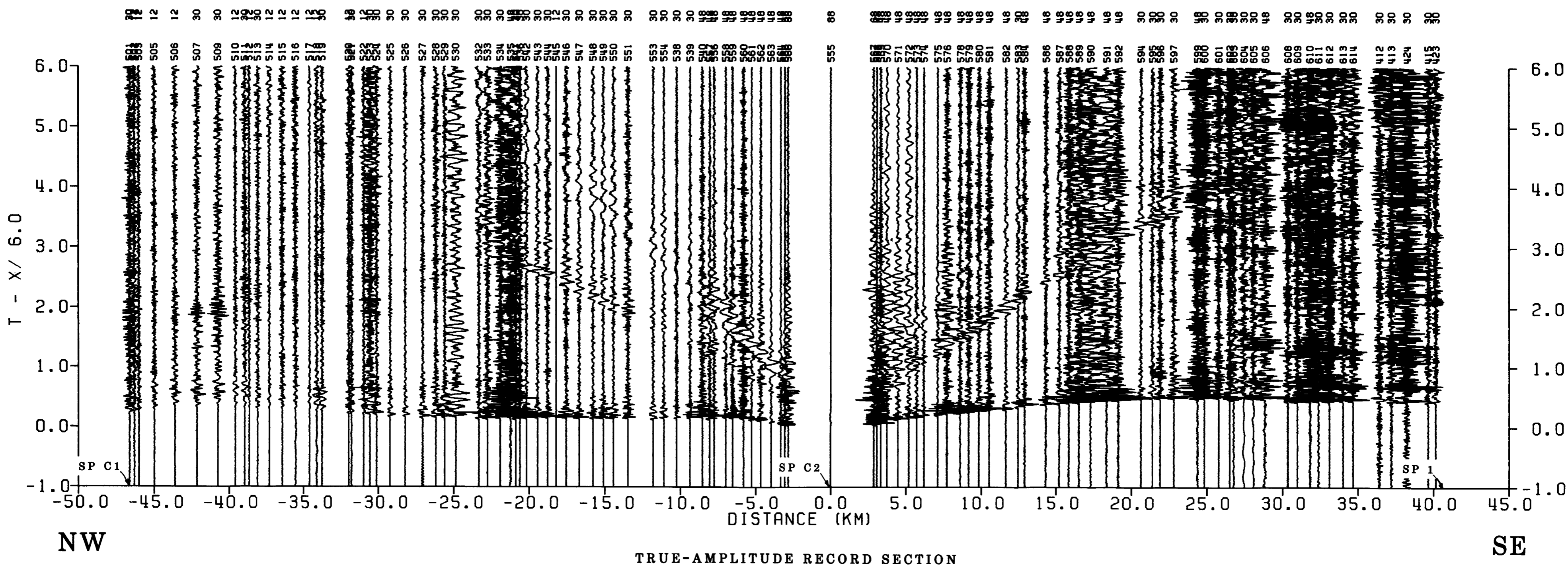


NORMALIZED RECORD SECTION

BLACK LAKE TO SKOWHEGAN  
SHOT POINT 3B  
by  
J.M. Murphy and J.H. Luetgert  
1986

This report is preliminary and has not been reviewed for conformity with U.S. Geological Survey editorial standards.





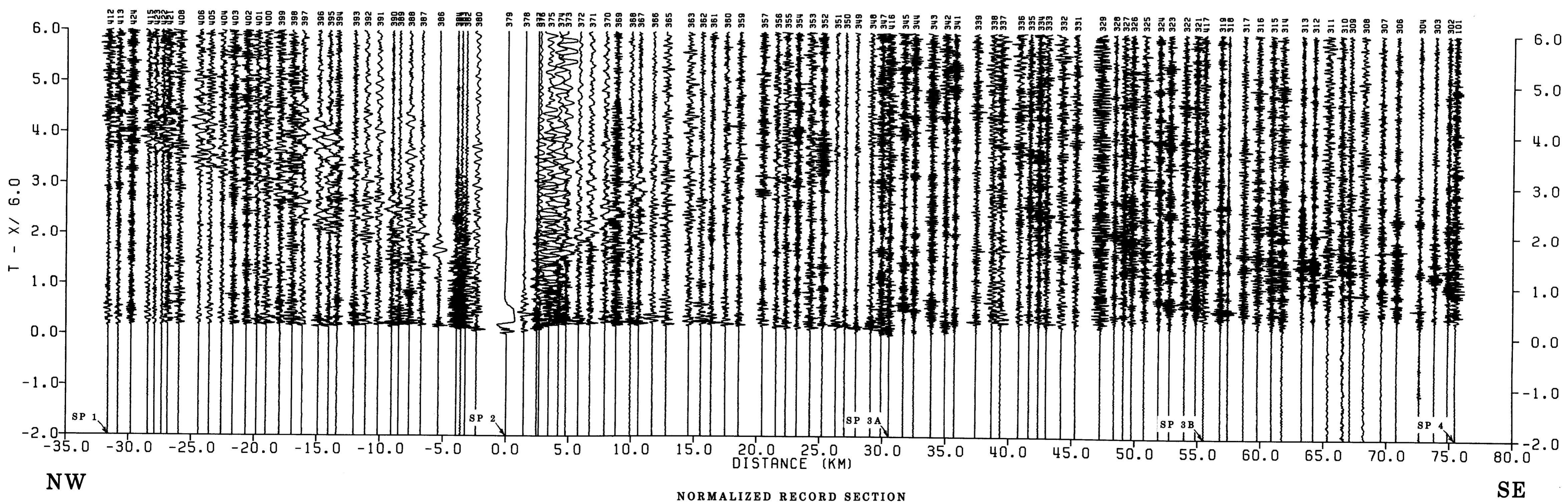
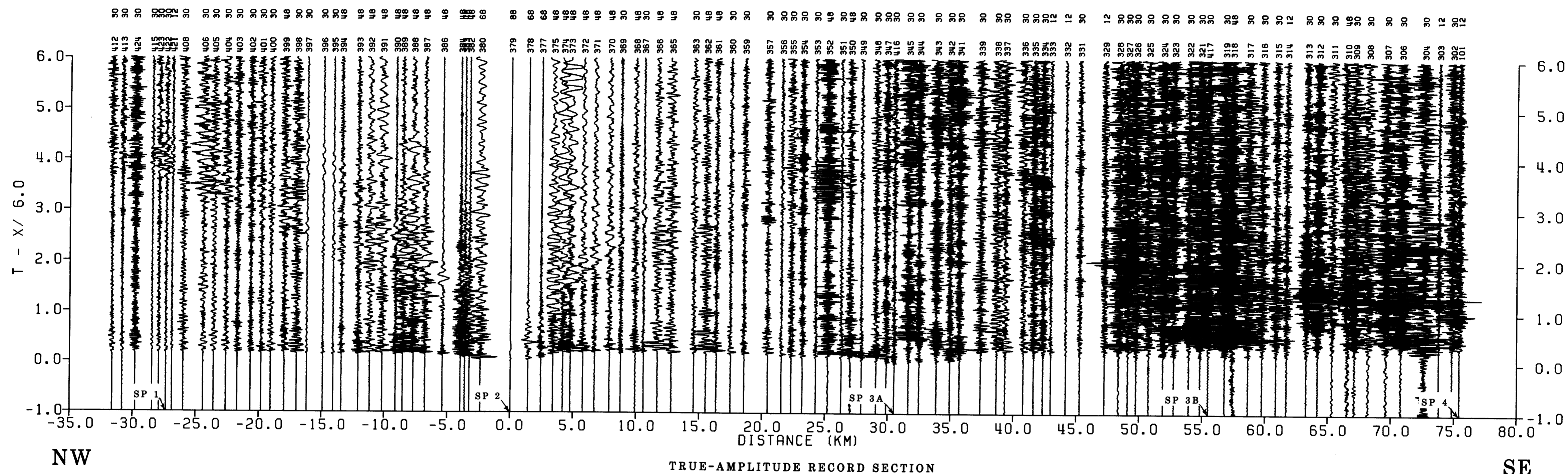
BLACK LAKE TO COBURN GORE  
 SHOT POINT C2

by  
 J.M. Murphy and J.H. Luetgert

1986

This report is preliminary and has  
 not been reviewed for conformity  
 with U.S. Geological Survey editorial  
 standards.





SKOWHEGAN TO THE CANADIAN BORDER

SHOT POINT 2

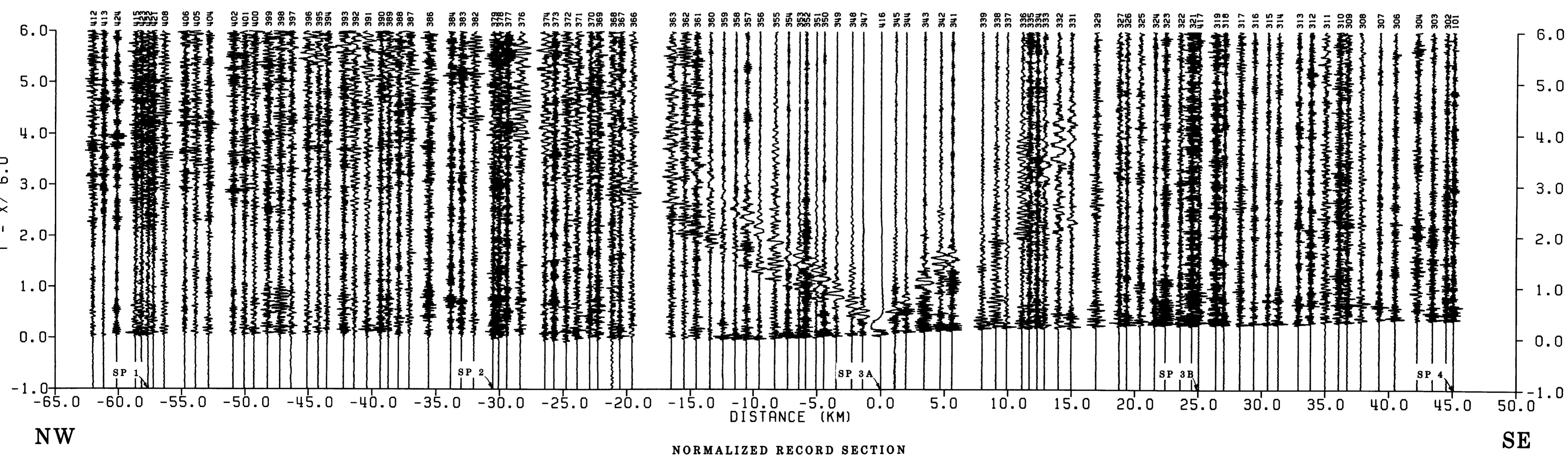
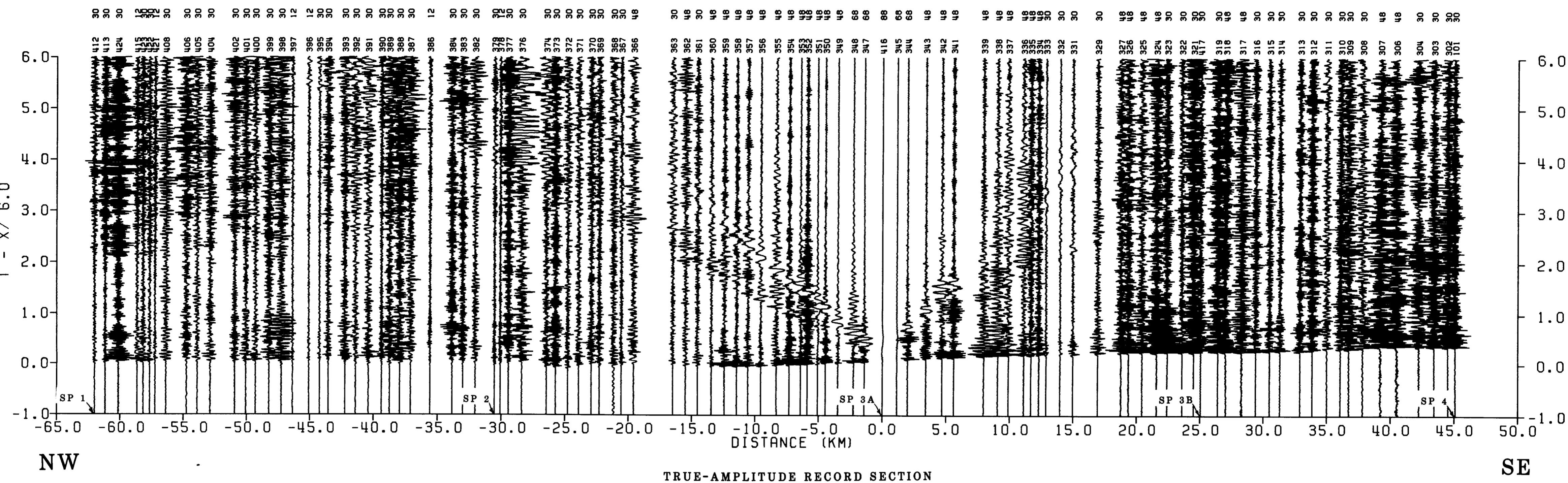
by

J.M. Murphy and J.H. Luetgert

1986

This report is preliminary and has not been reviewed for conformity with U.S. Geological Survey editorial standards.





SKOWHEGAN TO THE CANADIAN BORDER

SHOT POINT 3A

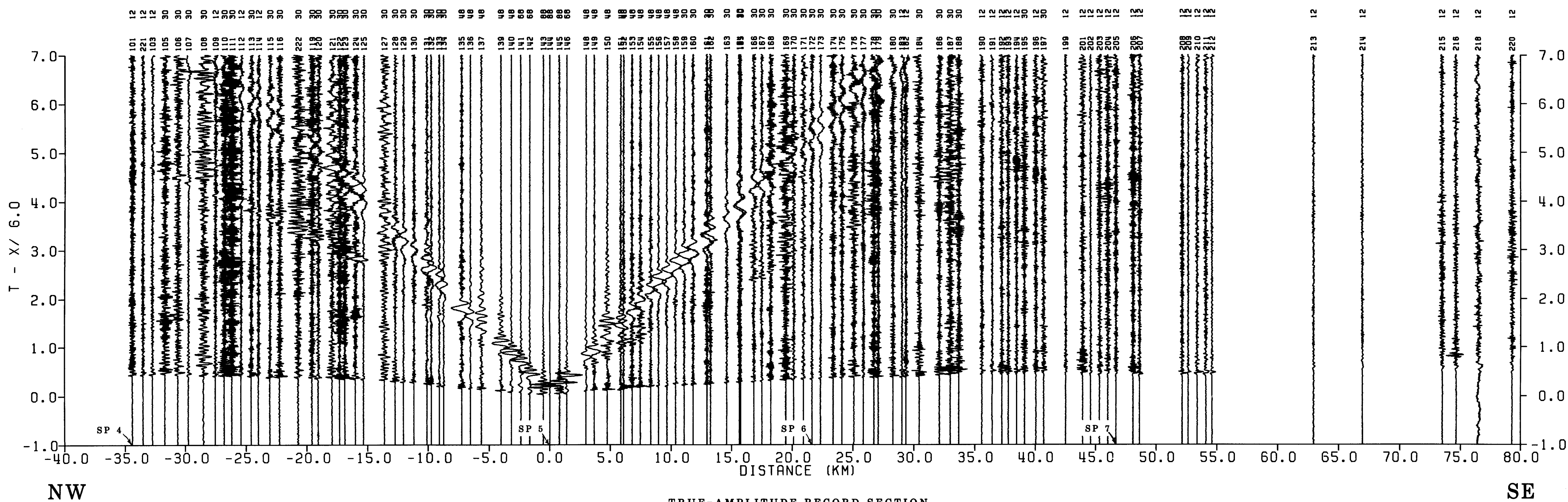
by

J.M. Murphy and J.H. Luetgert

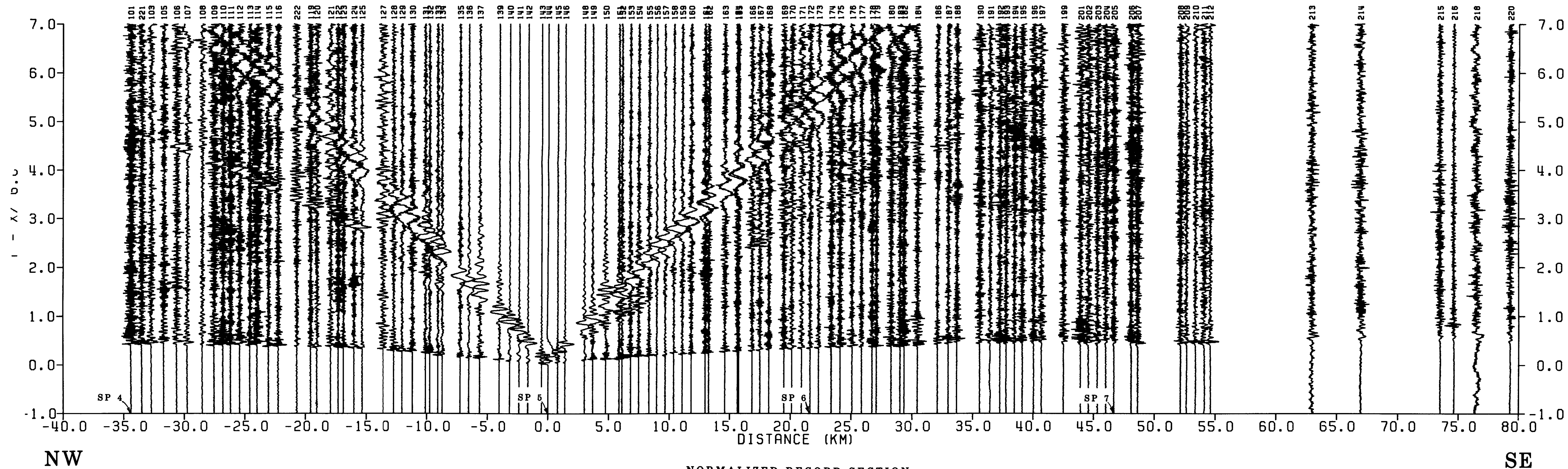
1986

This report is preliminary and has not been reviewed for conformity with U.S. Geological Survey editorial standards.





TRUE-AMPLITUDE RECORD SECTION



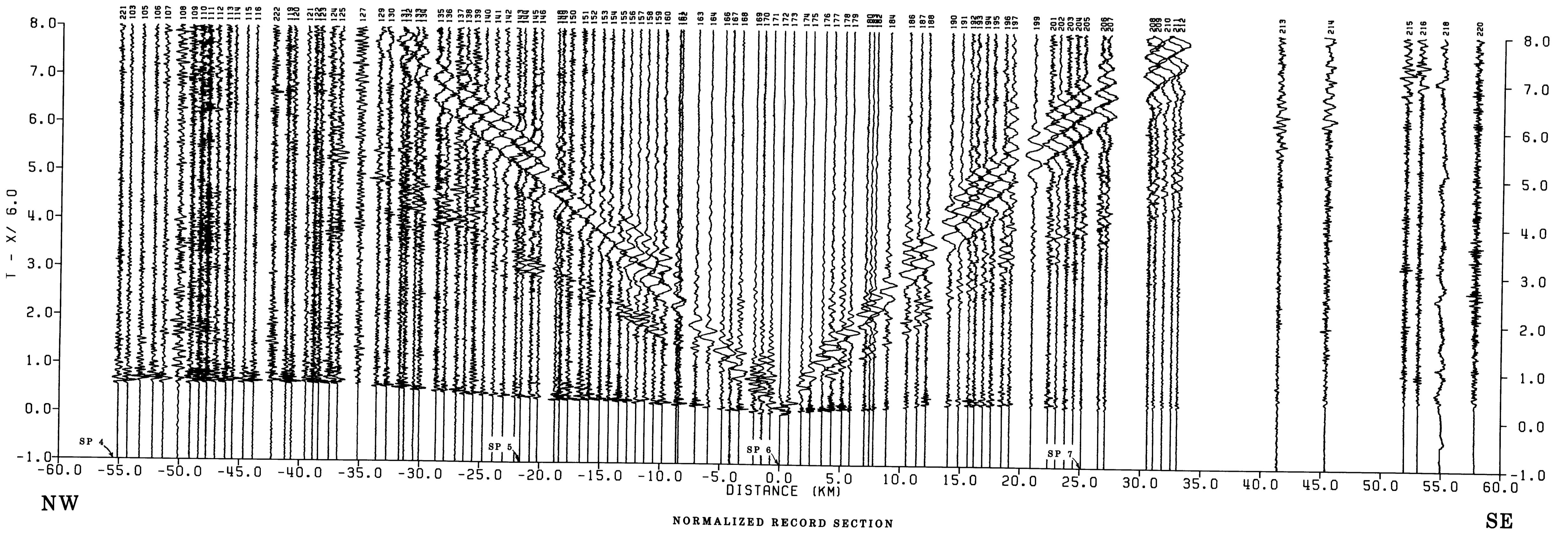
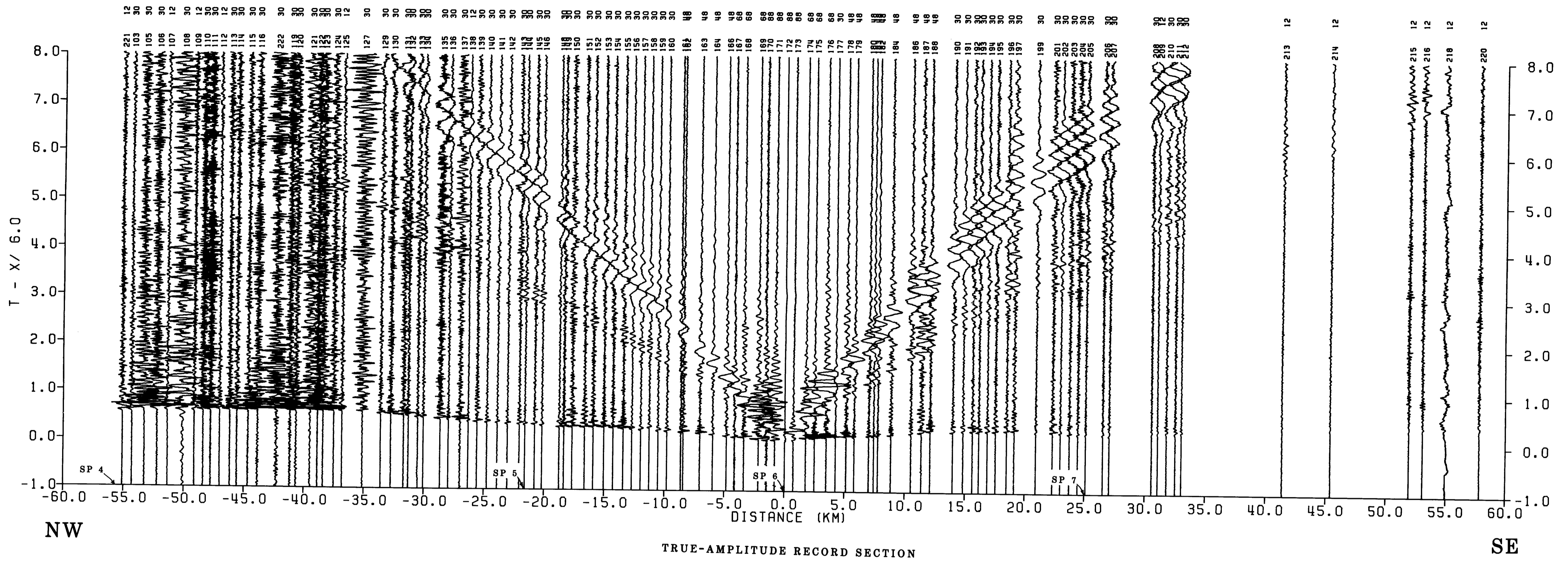
NORMALIZED RECORD SECTION

SKOWHEGAN TO DEER ISLE  
SHOT POINT 5

by  
J.M. Murphy and J.H. Luetgert

1986





SKOWHEGAN TO DEER ISLE  
SHOT POINT 6

by  
J.M. Murphy and J.H. Luetgert

1986