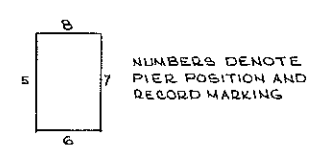


- SEISMIC INSTRUMENTS**
- A - P.E. GILMAN "BEUNE"  $T_0 = 35, T_f = 90, E-W$
  - B - P.E. GILMAN "BEUNE"  $T_0 = 25, T_f = 90, N-S$
  - C - P.E. GILMAN "BEUNE"  $T_0 = 25, T_f = 90, Z$
  - D - E.W. STRAIN  $T_0 = 90 + 180$
  - E - N.E. STRAIN  $T_0 = 90 + 180$
  - F - BENIOFF Z  $T_0 = 1, T_f = 0.2$
  - G - P.E. Z  $T_0 = 30, T_f = 90$
  - H - P.E. N-S  $T_0 = 30, T_f = 90$
  - I - P.E. E-W  $T_0 = 30, T_f = 90$
  - J - P.E. GILMAN ULP E-W  $T_0 = 60, T_f = 90, \text{FILTERED}$
  - K - P.E. GILMAN ULP N-S  $T_0 = 60, T_f = 90, \text{FILTERED}$
  - L - CIT MIDPERIOD  $T_0 = 15, T_f = 90$
  - M - BENIOFF Z  $T_0 = 1, T_f = 0.2 + 90$
  - M-1 - SIMULATED WA TORSION  $\times 2800$
  - N - BENIOFF N-S  $T_0 = 1, T_f = 0.2 + 90$
  - O - BENIOFF E-W  $T_0 = 1, T_f = 0.2 + 90$
  - P - P.E. GILMAN ULP Z  $T_0 = 60, T_f = 90 + 300, \text{FILTERED}$
  - Q - CIT-LEHNER 4 X  $T_0 = 10, N-S$
  - R - CIT-LEHNER 4 X  $T_0 = 10, E-W$
  - S - CIT-LEHNER 4 X  $T_0 = 10, Z$
  - T - L+G 4 CHANNEL STRONG MOTION  $T_0 = 0.8$   
N, E, Z 100 X 4-4 X
  - U - L+G 4 CHANNEL STRONG MOTION  $T_0 = 0.8$   
E-4 X, Z-4 X
  - V - W.A. TORSION E-W  $\times 2800$
  - W - W.A. TORSION N-S  $\times 2800$
  - X - MILNE EXPERIMENTAL SEISMO
  - Y - GRAVIMETER & EXPERIMENTAL PIER
  - Z - EXPERIMENTAL RECORDING ROOM
  - GS - L+G SEISMO  $T_0 = 1, T_f = 0.1$

SUBSCRIPT 'S' = SEISMOMETER  
 SUBSCRIPT 'D' = RECORDED  
 SUBSCRIPT 'SD' = SEISMOMETER & RECORDED  
 SUBSCRIPT 'T' = TELEMETRED TO MUDD



DRAWING NUMBER  
13376

10 KVA  
115V 60W  
STANDBY GENERATOR

bbb = 3 SETS BATTERIES  
 ccc = 3 CHARGERS WITH LAMP SUPPLY  
 trl = TRAILER BATTERY CHARGING

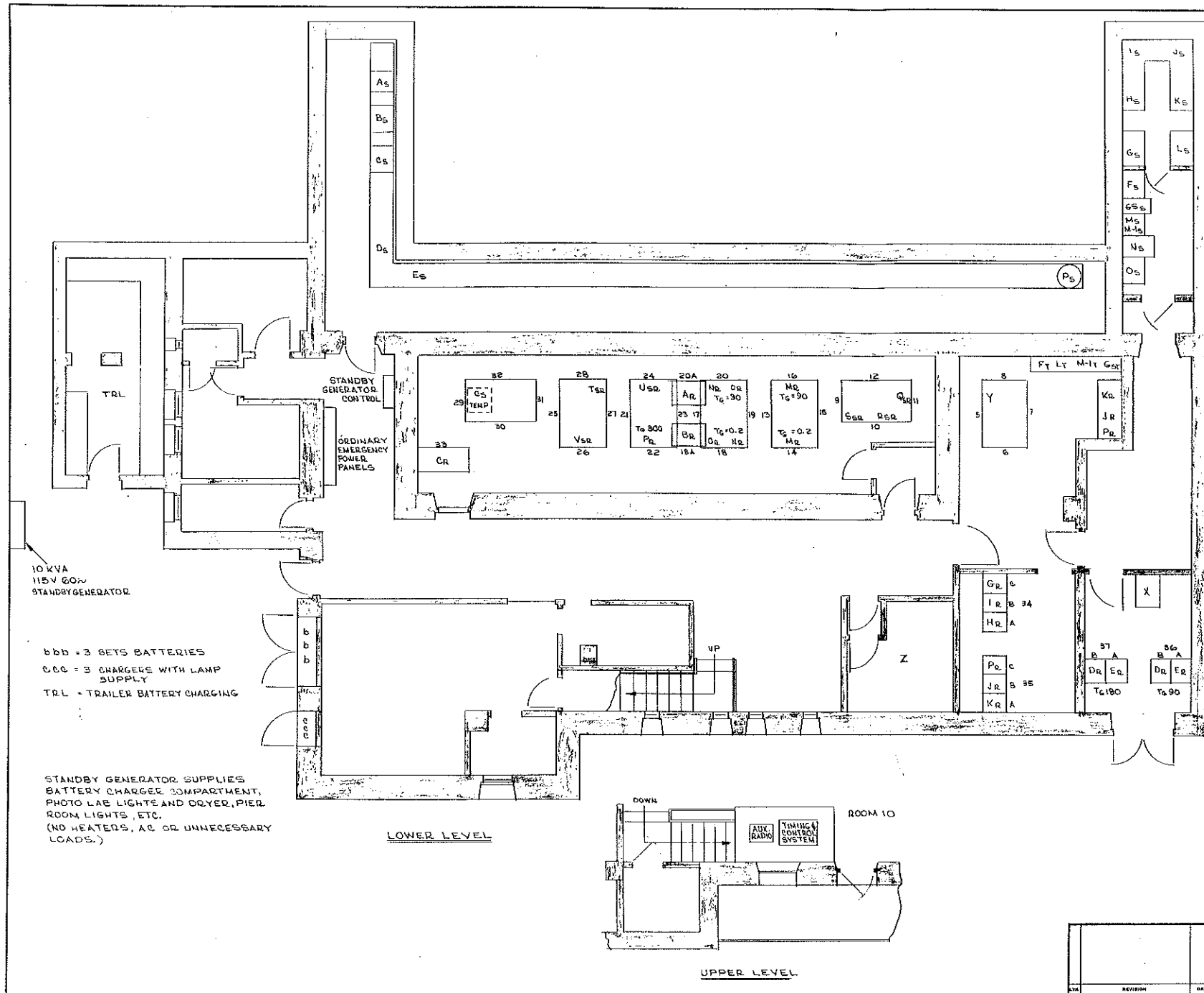
STANDBY GENERATOR SUPPLIES  
 BATTERY CHARGED COMPARTMENT,  
 PHOTO LAB LIGHTS AND DRYER, PIER,  
 ROOM LIGHTS, ETC.  
 (NO HEATERS, AC OR UNNECESSARY  
 LOADS.)

LOWER LEVEL

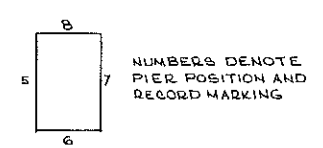
UPPER LEVEL

STATUS AS OF 9-15-77

UNLESS OTHERWISE SPECIFIED (SCALE)		DRAWN S. J. JONES	DATE 9-13-77	CALIFORNIA INSTITUTE OF TECHNOLOGY SEISMOLOGICAL LABORATORY	
DESIGNED S. J. JONES	DATE 9-13-77	APPROVED S. J. JONES	DATE 9-13-77	TITLE KRESGE LAB SEISMIC SENSING & RECORDING INSTRUMENT POSITIONS	
REVISION	DATE	NEXT ASSEMBLY	CONTRACT	FINISH	SCALE 1/4" = 1'
					DRAWING NUMBER 13376



- SEISMIC INSTRUMENTS**
- A - P.E. GILMAN "BEUNE"  $T_0 = 35, T_f = 90, E-W$
  - B - P.E. GILMAN "BEUNE"  $T_0 = 25, T_f = 90, N-S$
  - C - P.E. GILMAN "BEUNE"  $T_0 = 25, T_f = 90, Z$
  - D - E.W. STRAIN  $T_0 = 90 + 180$
  - E - N.E. STRAIN  $T_0 = 90 + 180$
  - F - BENIOFF Z  $T_0 = 1, T_f = 0.2$
  - G - P.E. Z  $T_0 = 30, T_f = 90$
  - H - P.E. N-S  $T_0 = 30, T_f = 90$
  - I - P.E. E-W  $T_0 = 30, T_f = 90$
  - J - P.E. GILMAN ULP E-W  $T_0 = 60, T_f = 90, FILTERED$
  - K - P.E. GILMAN ULP N-S  $T_0 = 60, T_f = 90, FILTERED$
  - L - CIT MIDPERIOD  $T_0 = 15, T_f = 90$
  - M - BENIOFF Z  $T_0 = 1, T_f = 0.2 + 90$
  - M-1 - SIMULATED WA TORSION  $\times 2800$
  - N - BENIOFF N-S  $T_0 = 1, T_f = 0.2 + 90$
  - O - BENIOFF E-W  $T_0 = 1, T_f = 0.2 + 90$
  - P - P.E. GILMAN ULP Z  $T_0 = 60, T_f = 90 + 300, FILTERED$
  - Q - CIT-LEHNER 4 X  $T_0 = 10, N-S$
  - R - CIT-LEHNER 4 X  $T_0 = 10, E-W$
  - S - CIT-LEHNER 4 X  $T_0 = 10, Z$
  - T - L+G 4 CHANNEL STRONG MOTION  $T_0 = 0.8$   
N, E, Z 100 X N-4 X
  - U - L+G 4 CHANNEL STRONG MOTION  $T_0 = 0.8$   
E-4 X, Z-4 X
  - V - W.A. TORSION E-W  $\times 2800$
  - W - W.A. TORSION N-S  $\times 2800$
  - X - MILNE EXPERIMENTAL SEISMO
  - Y - GRAVIMETER & EXPERIMENTAL PIER
  - Z - EXPERIMENTAL RECORDING ROOM
  - GS - L+G SEISMO  $T_0 = 1, T_f = 0.1$
- SUBSCRIPT 'S' = SEISMOMETER  
 SUBSCRIPT 'R' = RECORDED  
 SUBSCRIPT 'SR' = SEISMOMETER & RECORDED  
 SUBSCRIPT 'T' = TELEMETERED TO MUDD



DRAWING NUMBER  
13376

STATUS AS OF 9-15-77

UNIVERSITY OF CALIFORNIA	DESIGNED BY	DATE	CALIFORNIA INSTITUTE OF TECHNOLOGY SEISMOLOGICAL LABORATORY
	DRAWN BY	DATE	
SEISMOLOGICAL LABORATORY	APPROVED BY	DATE	TITLE KQESGE LAB SEISMIC SENSING & RECORDING INSTRUMENT POSITIONS
	DATE	DATE	
REVISION	DATE	CONTRACT	FINISH
			SCALE 1/4" = 1'
			DRAWING NUMBER 13376