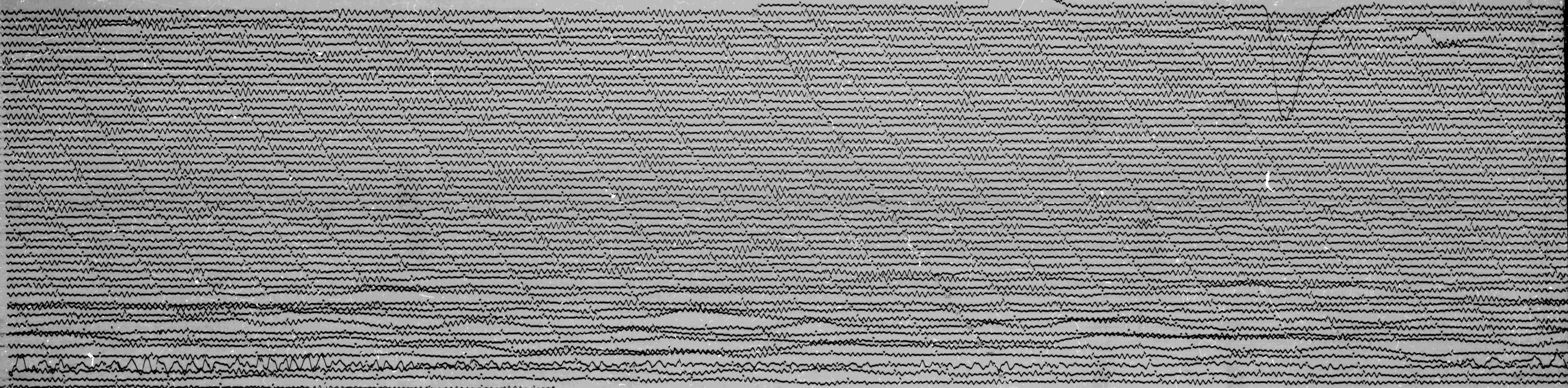


MAR 4 1966

MAR 4 1966



STATION Δ I COMP E-17 MAG 7.0 CAL CUR 2.4 G 0.093 N/A
 DATE ON 3-4-1966 TIME ON 01:31 CORR +0.000 MS @ 0112 GMT
 DATE OFF 3-5-1966 TIME OFF 01:51 CORR +6.247 MS @ 0134 GMT
 To 15 T 100

↑
 GND INT.
 E