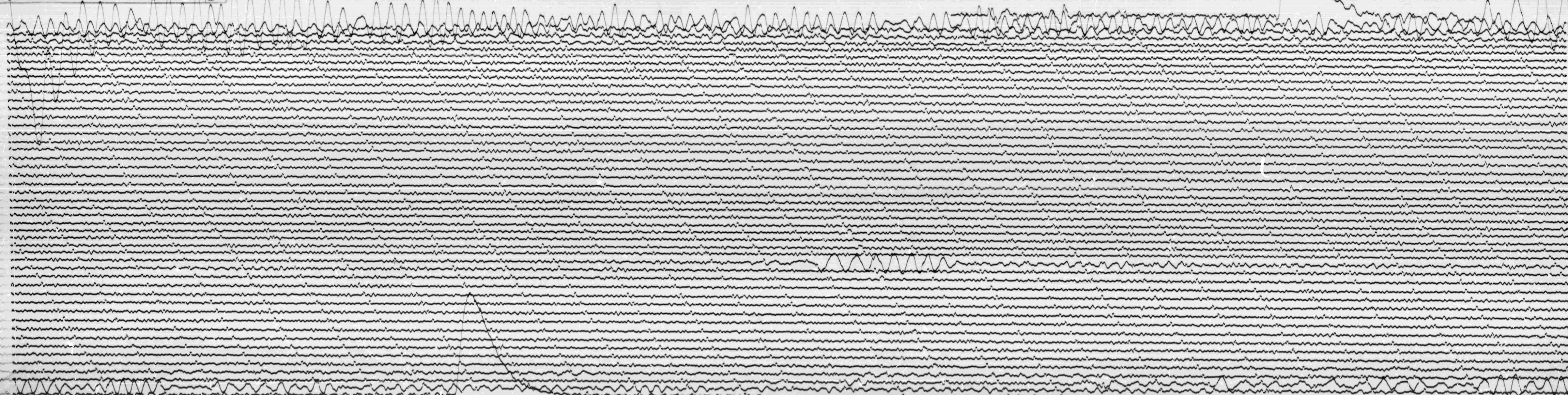


STATION *CTA* COMP *Z* MAG *5000* CAL CUR *10* G *0.05* N/A
DATE ON *5-5-66* TIME ON *0005* CORR *000* 10 MS @ *0030* GMT
DATE OFF *5-6-66* TIME OFF *0002* CORR *000* 10 MS @ *0030* GMT
To 15" Ig 100 Remarks.

GRND MOT. ↑
UA

MAR 5 1966



MAR 6 1966

CTA
LP-2