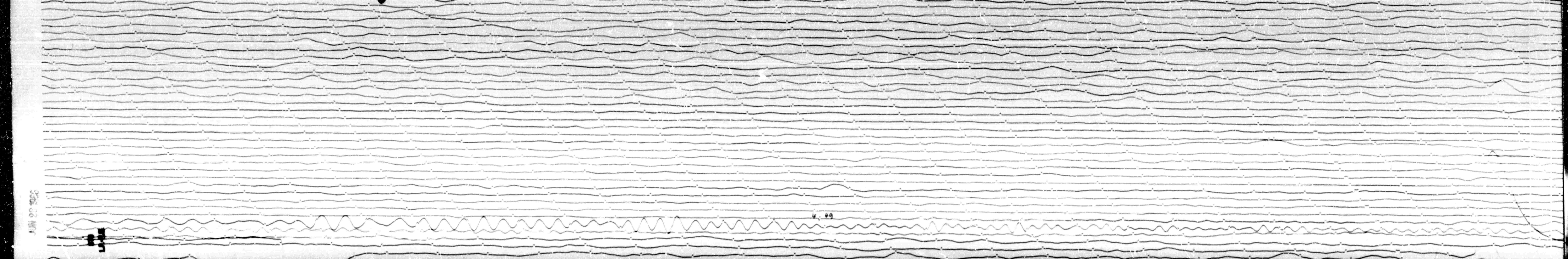
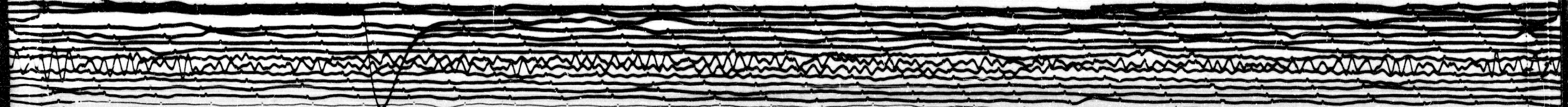


JUN 27 1962

STATION 270 COMP 8 MAG 7.50 CAL CUR 0.40 G 0.09 AN/A  
DATE ON 7/1/62 TIME ON 07:29 CORR +100/0 MS @ 02:35 GMT  
DATE OFF 7/1/62 TIME OFF 07:36 CORR +100/0 MS @ 02:09 GMT  
to 45 Ig 100 Remarks:

↑  
CENT  
↓



JUN 20 1962

4.49