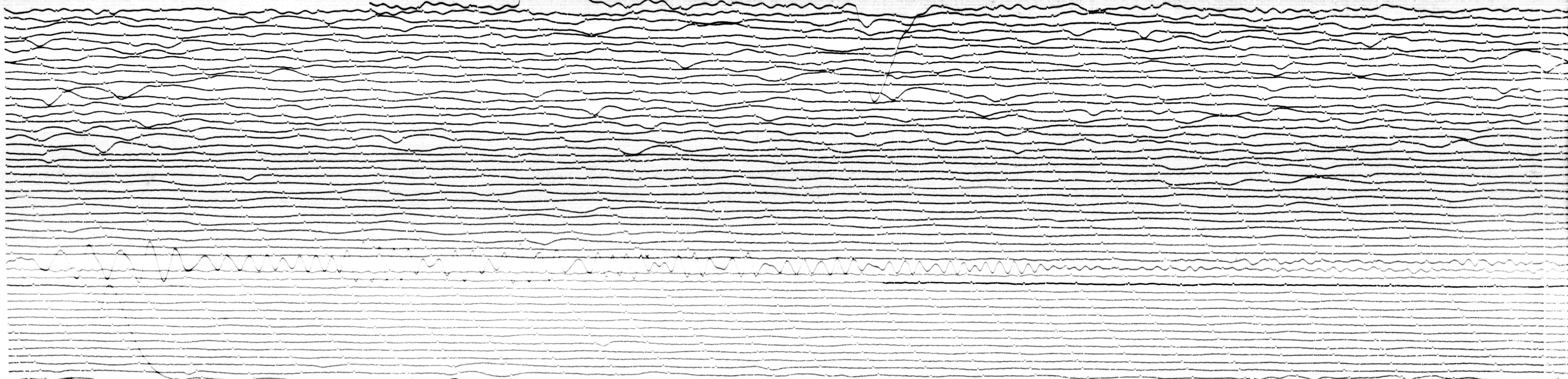


STATION *BHP* COMP *LPN* MAG *750* CAL CUR *0.20* G *0.026N/A*
DATE ON *4-27-66* TIME ON *1225* CORR *0.7* MS @ *1328* GMT
DATE OFF *4-28* TIME OFF *1222* CORR *0.00* MS @ *1328* GMT
To *15Tg/00* Remarks:

JUN 27 1966



JUN 28 1966