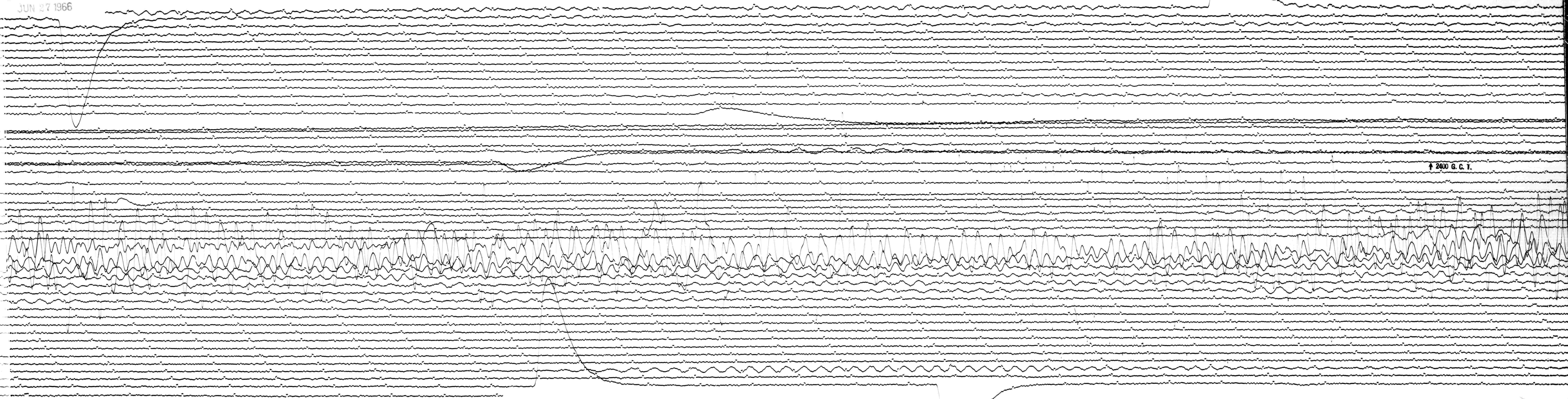


JUN 27 1966

STATION 062 COMPLETED JUN 27 1966
ON 12.35 GCT OFF 1410 GCT CORR -390 AT 1200 GCT
CAL CUR. 050 MOT. CONST. 105 MAG. 6X TA 15 100



↑ 2400 G. C. T.

JUN 28 1966

00
121