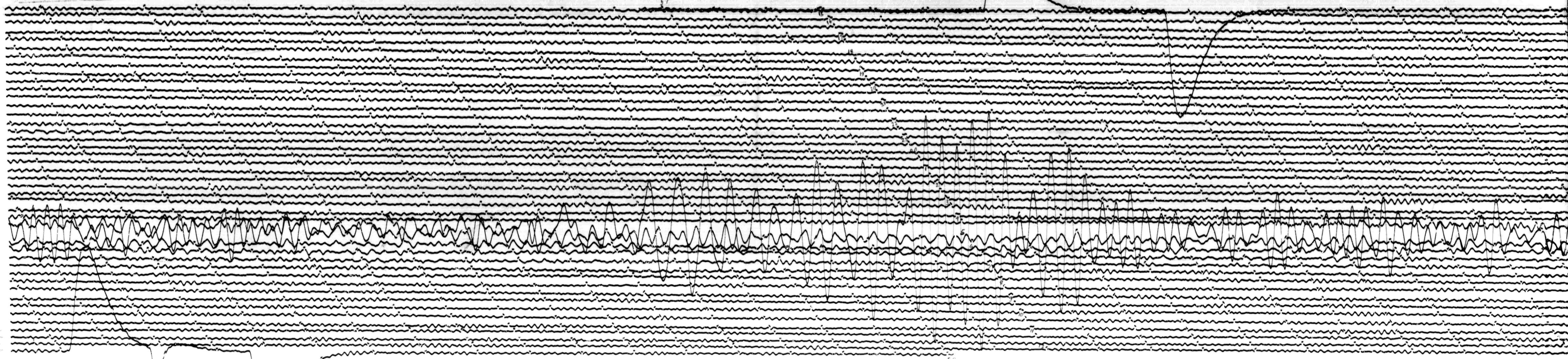


STATION 800 COMP 2 MAG 3.000 CAL CUR 9.10 G 2.10E N/A
DATE ON 6-27-66 TIME ON 1457 CORR -1.35 / 0 MS @ 12.97 GMT
DATE OFF 6-29-66 TIME OFF 1258 CORR -1.65 / 1.2 MS @ 12.91 GMT
To 15 Tg 100 Remarks:

GRID INT. ↑
UP

JUL 2 1966



57

V

59

100-1