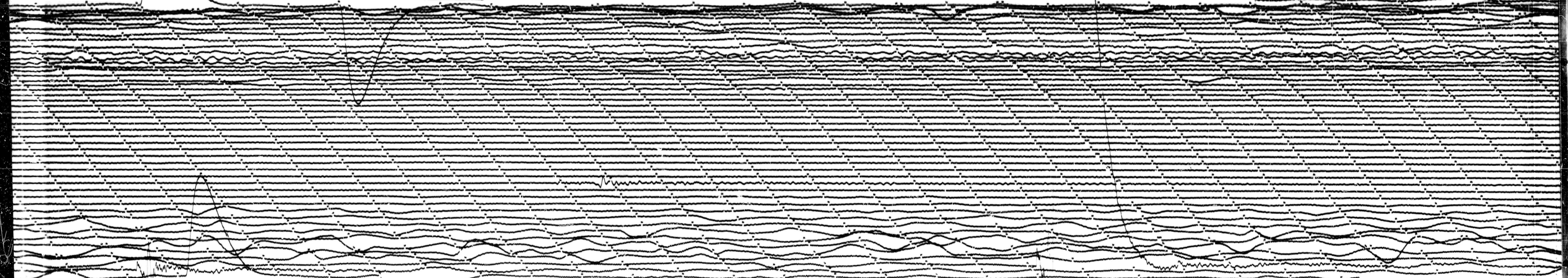


JUN 28 1966

STATION *41P* COMP *45* MAG *750* CAL CUR *02* *0007* N/A  
DATE ON *6/28/66* TIME ON *0007* CORR *385.0* MS @ *0000* GMT  
DATE OFF *6/29/66* TIME OFF *0003* CORR *245.0* MS @ *0000* GMT  
To *Lt* 100 Remarks:

GRND MOT.



JUN 29 1966

100