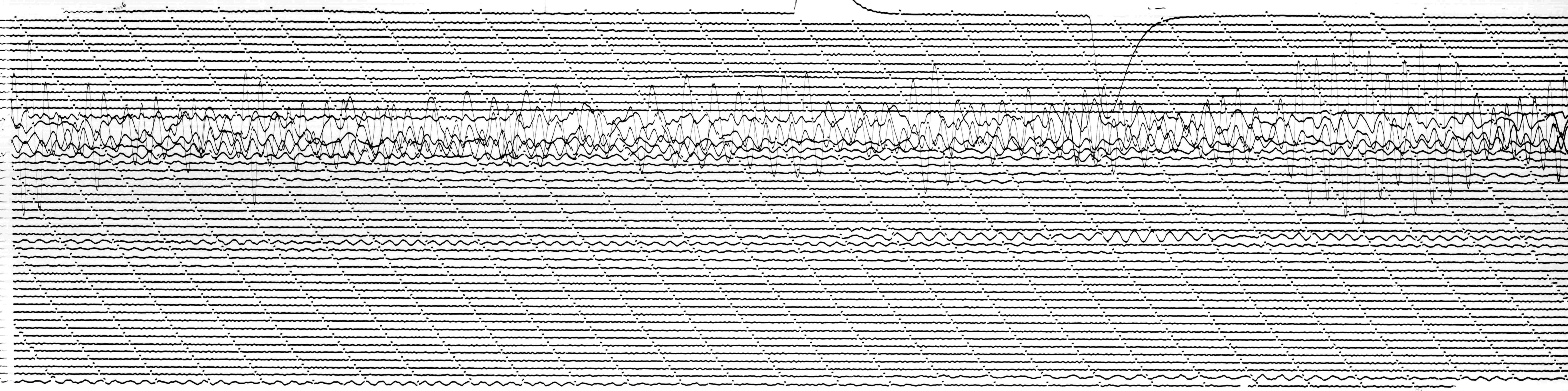


MAR 19 1966
STATION *224* COMP *Z* MAG *1500* CAL CUR *200 G 102 N/A*
DATE ON *3/19/66* TIME ON *1936* CORR *-2.1* MS @ *1940* GMT
DATE OFF *3/24/66* TIME OFF *1926* CORR *-3.7* MS @ *1940* GMT
To *15* Tg *100* Remarks: *Time Con Estimated*
GRND MOT. ↑
40



MAR 20 1966
40