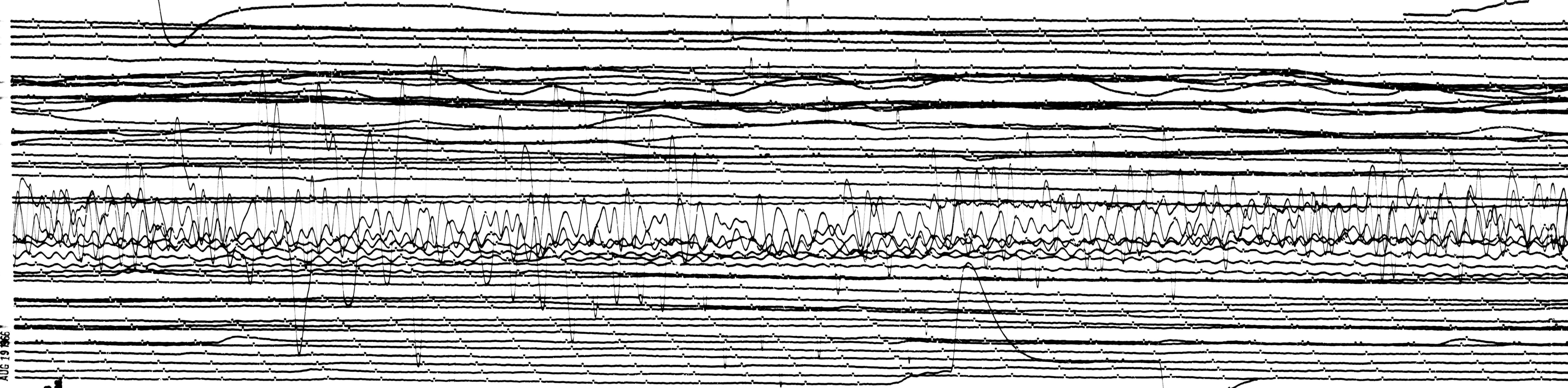


AUG 19 1966

STATION 5185 COMPLETE MAG 2.702 CAL CUR 2.1 @ 0.222 N/A
DATE ON 08/19/66 TIME ON 0014 CORR ± 0.02 / - MS @ 0.022 GMT
DATE OFF 08/19/66 TIME OFF 2336 CORR + 0.02 / 2 MS @ 0.222 GMT
To 107g-100 Remarks:

↑
MS



AUG 19 1966