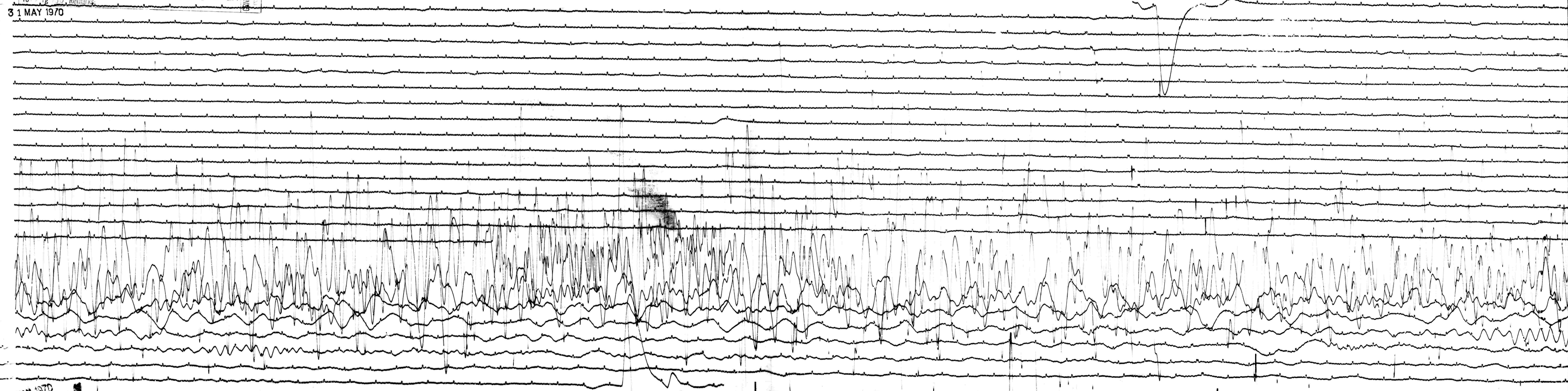


STATION COR COMP E MAG 1500 CAL CUR 0.2 G 0.018 N/A  
DATE ON 5 31 1970 TIME ON 0502 CORR 1.764 / 0 MS @ 2456 GMT  
DATE OFF 6 1 1970 TIME OFF 0541 CORR 1.705 / 0 MS @ 0527 GMT  
To: Ig 100, Remarks:

GRAND MOT. ↑

31 MAY 1970



1 JUN 1970