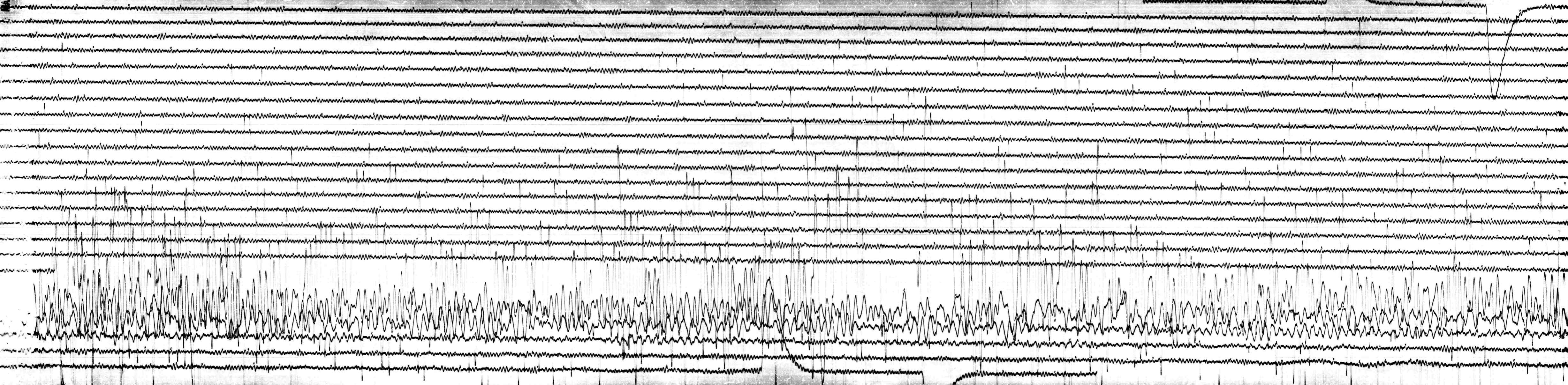


MAY 23 1968

STATION C74 COMP Z MAG 5000 CAL CUR 10 G 103 N/A
DATE ON 5-23-68 TIME ON 0017 CORR 000 10 MS @ 0030 GMT
DATE OFF 5-24-68 TIME OFF 0009 CORR 000 10 MS @ 0030 GMT
To 15 Ig 100 Remarks:

↑
↓
↑
↓



MAY 24 1968

CTM
1-1