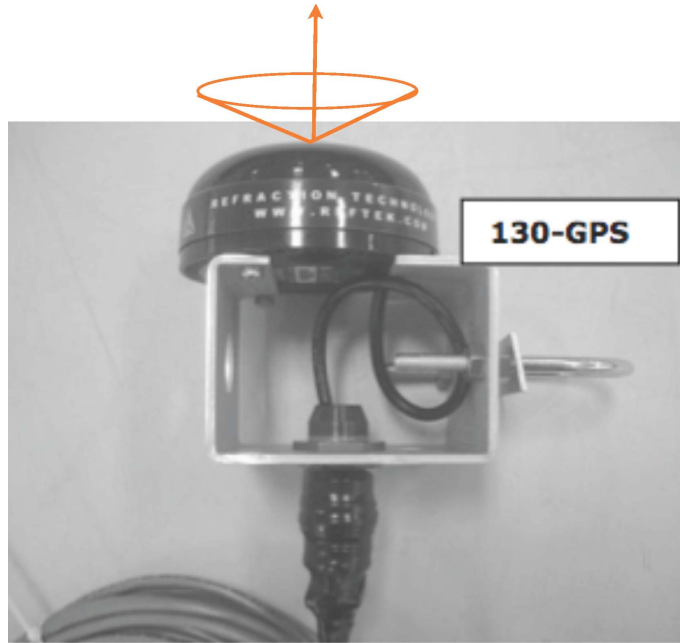


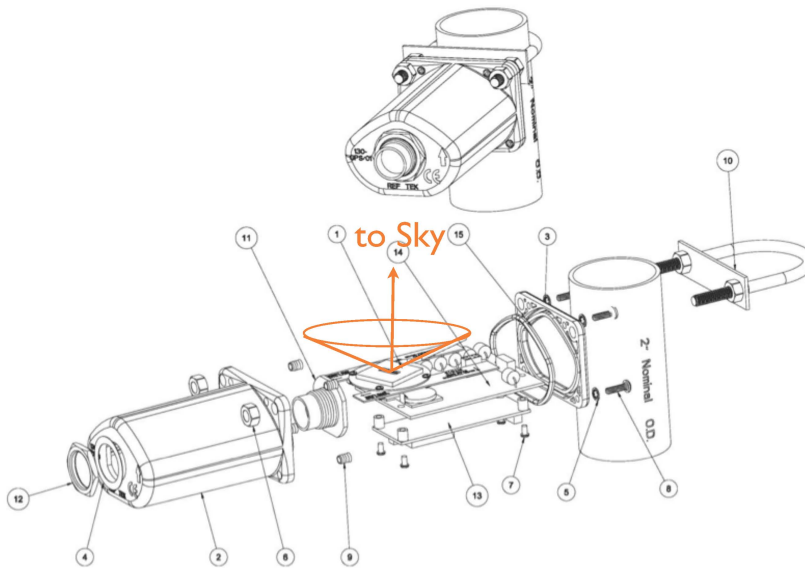
RT130 GPS ORIENTATION GUIDE

No matter which GPS mounting type is used the following guidelines should be implemented for best possible satellite signal:

1. The 130-GPS should be placed in the upright position.
The new 130-GPS (Hockey-Puck design) should be mounted with the dome pointing up.



On older 130-GPS units this is indicated by the arrows on the front and back of the unit). Mount the GPS unit with the arrows facing up with an unobstructed overhead view.



2. Dense wood and metal structures interfere with the satellite signals. Heavy snow cover may also reduce the antenna signal.

3. A minimum of 15-degree line of sight from the horizon should be kept at all times.
4. If the GPS unit is located near a radar installation or satellite equipment, ensure that it is positioned outside the cone of transmission. For best results, locate the unit below and at least ten feet away from any satellite communication equipment.

TAPING the GPS Connector Set

We believe the discharge is not from lightning but from charge buildup on the GPS case in very dry climates. What we know about static discharge and electronic components is that a single discharge may only weaken a component, but repeated discharges will eventually cause the device to fail.

To eliminate this problem, we have taped the PT0 connector set, this prevents a static discharge from occurring at all on the GPS, and with this remedy we have not been able to reset or hang the 130. Our recommendation is for field personal to tape the antenna connectors so that no metal is visible.

