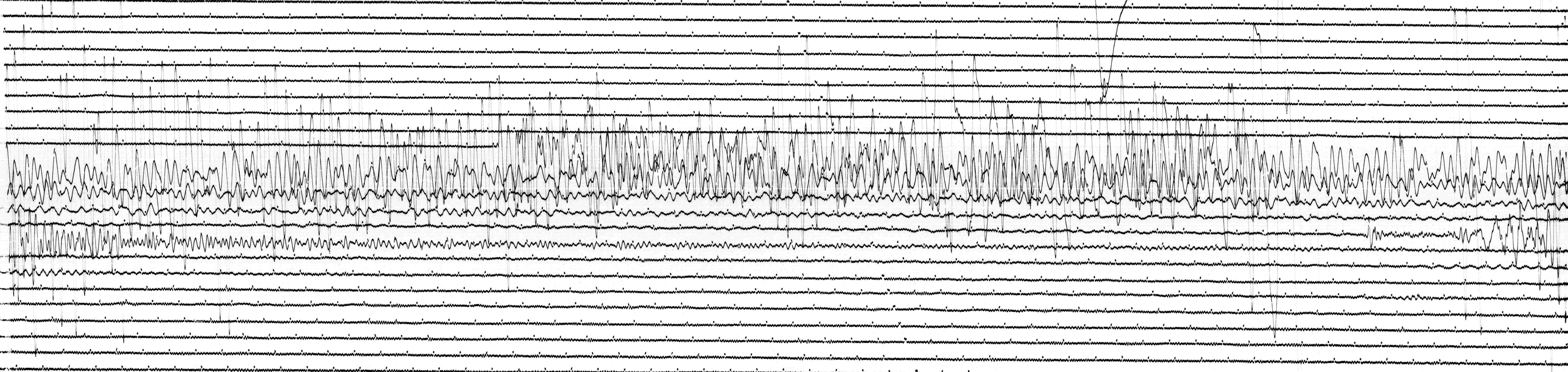


9 DEC 1970

STATION *col* COMP *2* MAG *500* CAL CUR *200* G *102* N/A  
 DATE ON *11/4/70* TIME ON *115* CORR *-030* IS @ *1455* GMT  
 DATE OFF *11/4/70* TIME OFF *10* CORR *-020* IS @ *1456* GMT  
 To 15 Tg 160 Remarks:

GRID MOT. 

1425



10 DEC 1970

5.1

1102