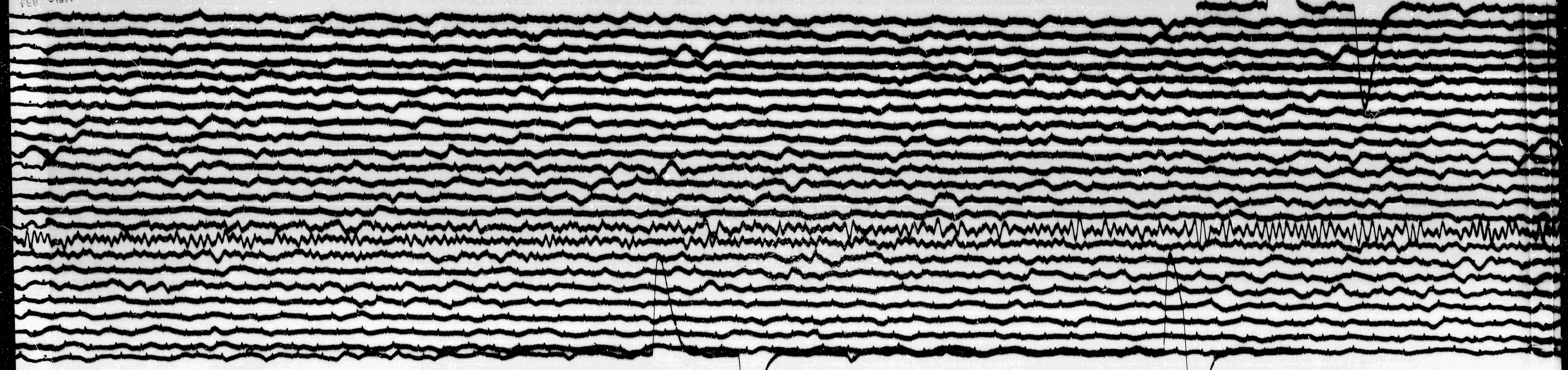


FEB 9 1971



STATION *AMP* COMP *E10* MAG *740* CAL CUR *20* G *200* A/A
 DATE ON *29-71* TIME ON *0010* CORR *-65* 10 MS @ *0000* GMT
 DATE OFF *2-10-71* TIME OFF *0008* CORR *-60* 10 MS @ *0000* GMT
 To *15* Tg *10* Remarks:

GRID MOT. ↑

FEB 10 1971

L-28